

Aberrant Right Subclavian Artery: Arteria Lusoria

Choayb S*, Aubin Igombe SR, Imrani K, Moatassim Billah N and Nassar I

Radiology Department, Ibn Sina University Hospital Center, Rabat, Morocco

*Corresponding author: Choayb S, Radiology Department, Ibn Sina University Hospital Center, Rabat, Morocco; E-mail: choayb.safaa@gmail.com

Keywords: Arteria lusoria; Aberrant right subclavian artery; Dysphagia lusoria

Clinical Images

The word lusoria originates from the Latin expression: 'lusus nature' meaning 'trick of nature'. Arteria lusoria is an aberrant right subclavian artery that arises as the leftmost branch on the aorta and courses upward towards the right side. It can be retro esophageal, between the esophagus and trachea, or in front of the trachea [1]. It is the most frequent malformation of the aortic arch. It is asymptomatic in 90% of cases and can be discovered incidentally on radiological examinations performed in other contexts. Clinical signs are dominated by dyspnea due to tracheal compression and dysphagia due to esophageal compression. Injected CT-scan is the key examination for the diagnosis. It allows to search for extrinsic compression and to characterize the defective artery [2]. Arteria lusoria is associated with several genetic disorders such as Edward's, DiGeorge and, CHARGE syndrome. It is important to consider arteria lusoria in young patients with dysphagia, retrosternal pain and, dyspnea. No standardized treatment has been determined, though several surgical and non-surgical options have been suggested.

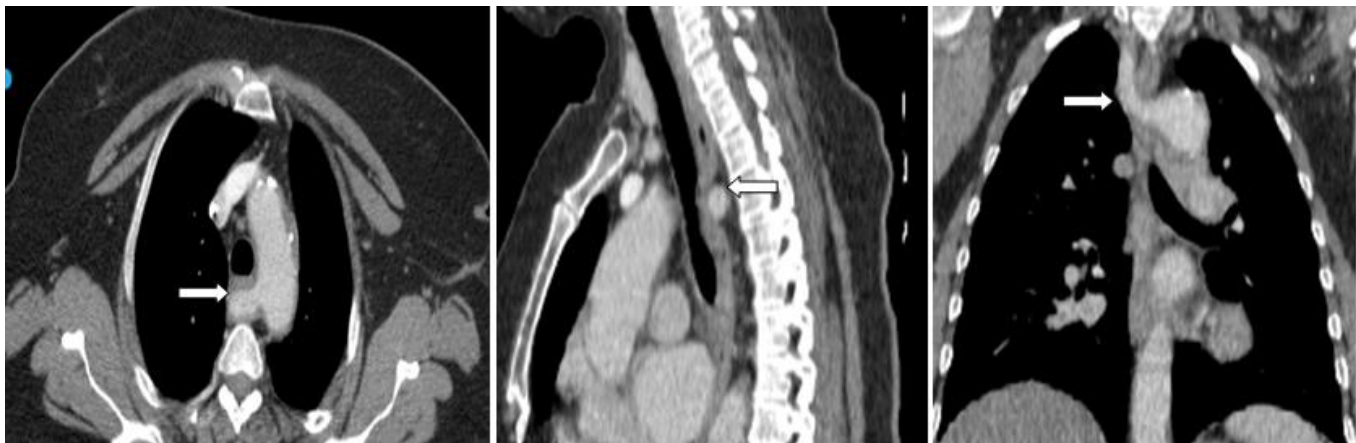


Figure: Contrast enhanced computed tomography study with an axial, lateral and coronal image showing a vascular image in favor of an aberrant right subclavian artery (arrows) passing posterior to the esophagus and trachea.

References

1. Jakobsen SS, Frokjaer JB, Larsen AC. Arteria lusoria : a trick of nature. Scand J Gastroenterol. 2021; 56: 621-623.
2. Laingonirina DHH, Rakotozafindrabe ALR, Razafindrato CI, Narindra Rajaonarison LHNO, Randriamifidy NH, Rabenjanahary

TH, et al. Arteria lusoria : A rare cause of chronic dysphagia. Clin Case Rep. 2021; 9.

Citation: Choayb S, Aubin Igombe SR, Imrani K, Moatassim Billah N, Nassar I (2022). Aberrant Right Subclavian Artery: Arteria Lusoria. SunText Rev Case Rep Image 3(2): 149.